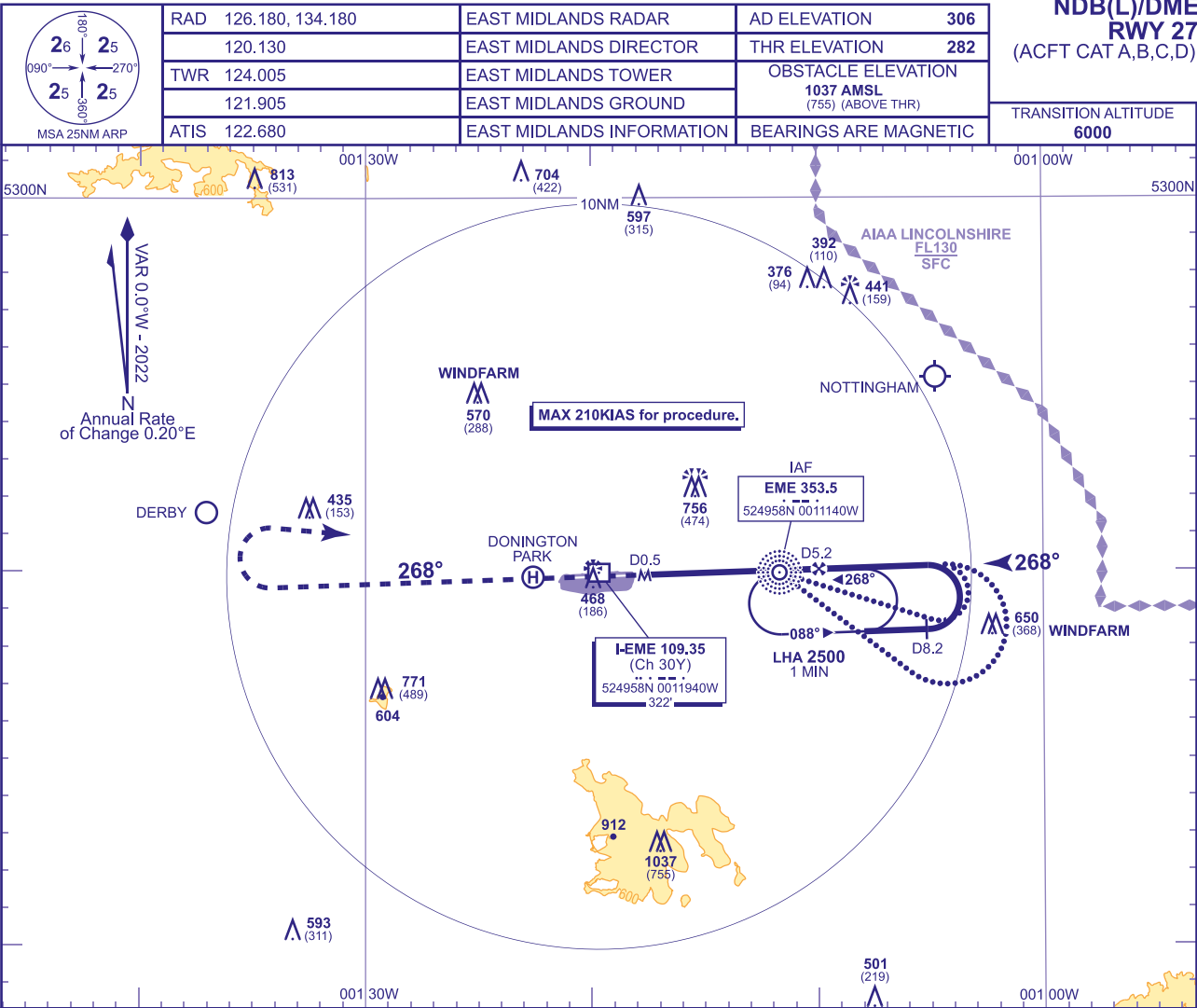


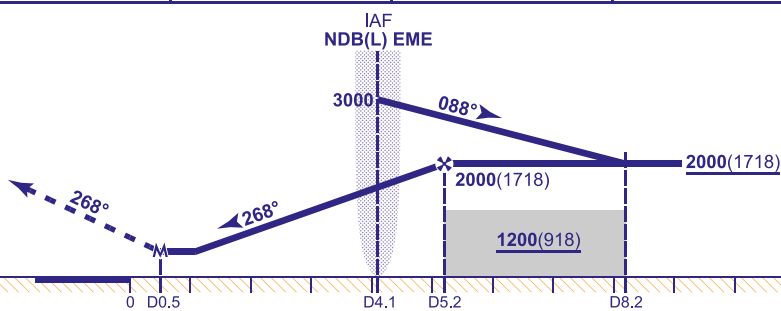
INSTRUMENT APPROACH CHART - ICAO

EAST MIDLANDS
NDB(L)/DME
RWY 27
(ACFT CAT A,B,C,D)



RECOMMENDED PROFILE Gradient 5.2%, 320FT/NM					
DME I-EME	5	4	3	2	1
ALT(HGT)	1930(1648)	1610(1328)	1290(1008)	970(688)	650(368)

MAPt I-EME DME 0.5
(3.6NM after NDB(L) EME)
Climb straight ahead to **3000**, or **I-EME D8.8** whichever is earlier then turn right to **NDB(L) EME** at **3000** or as directed.



Aircraft Category		A	B	C	D	Rate of descent	G/S KT	160	140	120	100	80
OCA (OCH)	Procedure	610(328)	610(328)	610(328)	610(328)		FT/MIN	850	740	640	530	420
VM(C)OCA (OCH AAL)	Total Area	770(464)	800(494)	1160(854)	1160(854)							

ALTERNATIVE PROCEDURE
From overhead NDB(L) EME **not below 3000**(2718) fly outbound on NDB(L) EME QDR 109° (CAT A,B); NDB(L) EME QDR 126° (CAT C,D), descending to **not below 2000**(1718). At I-EME DME 8.2 baseturn left to establish on the FAT. Once established continue as for main procedure.

NOTE 1 Lowest altitude to commence procedure from hold is **3000**.
2 Aircraft will normally be required to hold not lower than **3000**.